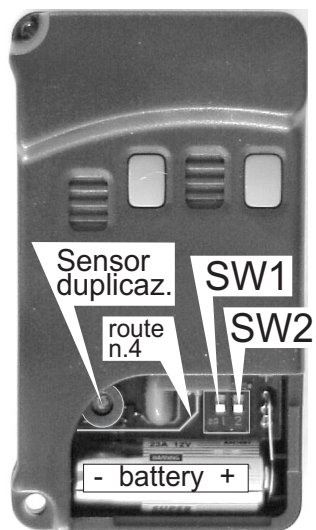


ELCA**GEMINI 9**

- TECHNICAL CHARACTERISTICS :
- ▶ power = 12v battery alkaline mod GP23A
 - ▶ standard code = 2000 codes
 - ▶ Button n 4 change the led color : red, yellow, green
 - ▶ Buttons n 1-3-2 are the channels
 - channels : 9-, four - buttons

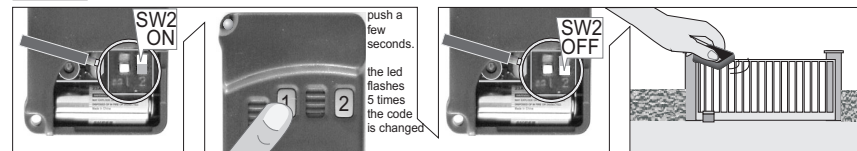
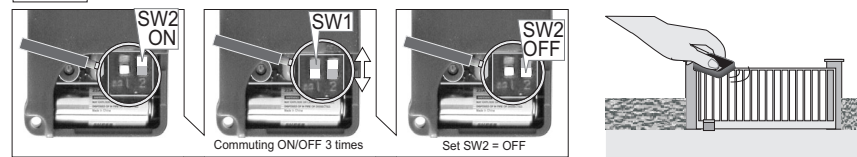


IMPORTANT!! : worn out batteries must be place in their provided containers!!!
 I GEMINI standard code have route n 4 interrupt ,GEMINI rolling-code have route n 4 not interrupt.



CODICE STANDARD (10 bit) .the handset is given with a Basic Code compatible with traditional handset having the (dip 1-2-3-4-5-6-7-8-9-10 = OFF). It is possible to change the Basic Code to invisible code : (pic.A) - Set **SW2 to position ON** ,push button n 1 a few seconds,when the button is released and after the led flashes 5 times the code is changed and assigned to the four channels.SET SW2 to OFFposition and memorize the new code on ELCA receiver or control board.

RETURN TO THE BASIC CODE (pic..B) -Set SW2 to position ON and commuting 3 times the SW1 (on-off) .Set SW2 =OFF.

FIG. A RANDOM CODE**FIG. B** RETURN TO THE BASIC CODE

ELCA snc Via Malintoppi,32 63023 Fermo (AP) Italy
 Tel:(0039) 0734-608484 Fax: (0039) 0734 - 605080
 E-mail: elcasnc@tin.it web:www.elcasnc.com