

# ELCA

# GEMINI

- TECHNICAL CHARACTERISTICS :**
- ▶ power = 1.2v battery alkaline mod GP23A
  - ▶ standard code = 2000 codes
  - ▶ rolling-code = 128.000.000 codes for each channel
  - ▶ channels : two, four - it is possible to generate 8 channels :



- ▶ **chan5** - it is obtained by pressing contemporary buttons n1 - n 3
- ▶ **chan6** - it is obtained by pressing contemporary buttons n 2- n 3
- ▶ **chan7** - it is obtained by pressing contemporary buttons n 1- n 4
- ▶ **chan8** - it is obtained by pressing contemporary buttons n 2- n 4

**IMPORTANT!! :** worn out batteries must be place in their provided containers!!!  
 I GEMINI standard code have route n 4 interrupt ,GEMINI rolling-code have route n 4 not interrupt.

**CODICE STANDARD (10 bit)** .the handset is given with a Basic Code compatable with traditional handset having the (dip 1-2-3-4-5-6-7-8-9-10 = OFF). It is possible to change the Basic Code to invisible code : (pic.A) - Set

**SW2 to position ON** ,push button n 1 a few seconds,when the button is released and after the led flashes 5 times the code is changed and assigned to the four channels.SET SW2 to OFFposition and memorize the new code on ELCA receiver or control board.

**RETURN TO THE BASIC CODE (pic..B)** -Set SW2 to position ON and commuting 3 times the SW1 (on-off) .Set SW2 =OFF.

It is possible to visualize the memorized codes ( pic. C ) ,this is to enable you to have same code on a traditional handset with 10 dip:

Set SW1 and SW2 to ON, push button n1 the lbed will show the equivalent contents to dip n 1,if it will have three slow flashes this means that dip n 1 is the same to ON ,if the flashes are quick, this means OFF .while they are flashing,it is possible to change by pushing button n 2 , repete for 10 times to visualize the 10 dip .By pushing the eleventh time button n 1 the led will remain OFF indicating that the procedures are over .SET SW1 and SW2 to OFF .

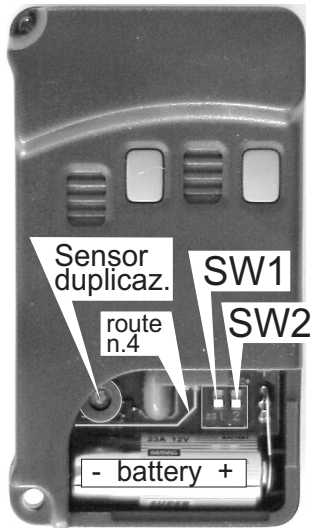
**DUPLICATE A GEMINI (pic..D)** - It is possible to duplicate a handset MASTER,with another sample -SLAVE-. Open the SLAVE door and set the SW2 = ON , take the MASTER handset and bring the led in front of the SLAVE sensor duplication, push button on MASTER handset ( that you desire to duplicate ) until the SLAVE led start to flash , this means that it received the correct code.During the flashing if a SLAVE button is pressed the code will be combined to that button, otherwise it will be automatically to button n 1. SET SW2 = OFF and

close the door.  
 WE ADVICE THESE OPERATIONS ARE NOT TO BE DONE IN BRIGHT ROOMS ..

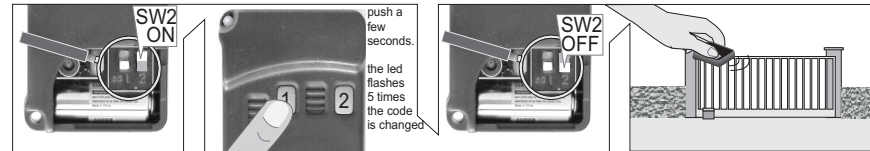
**CODICE ROLLING-CODE** .the rolling-code version is supplied with a memorised code on each button which may change on a particular alorythm, every time the button is pressed. A button may be pressed far from the receiver and the hand set will go out of synchronization with the receiver, therefore in this case you must synchronize the hand set with the receiver :

**SYNCRONIZATION OF THE HAND SET WITH RECEIVER (fig.E)** -If the button has been pushed less tha 10 times,therefore the code has been changed less than 10 times,the receiver is still synchronized. If the code has been changed more than 10 times, you only have to press the button twice in the direction of the receiver, this will synchronize the receiver with the hand set

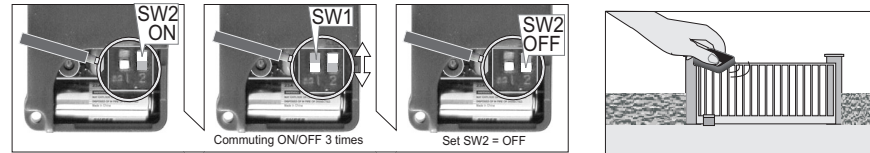
**DUPLICATE A HAND-SET** -to duplicate a hand-set, you have the same procedure as a standard code.



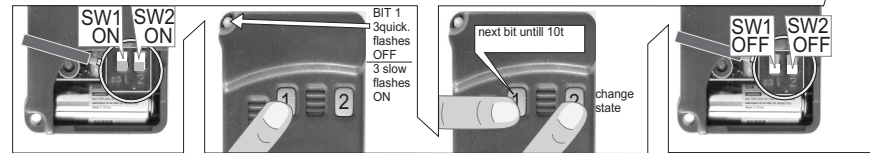
**FIG. A** RANDOM CODE



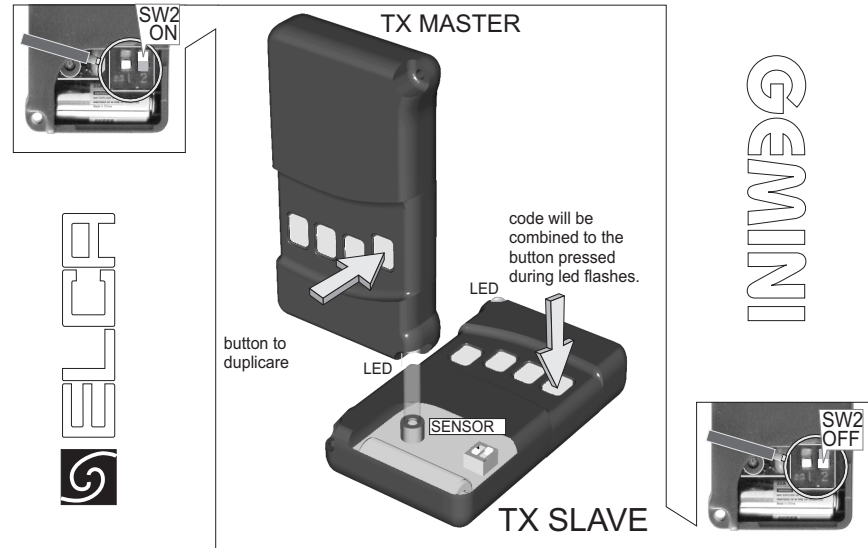
**FIG. B** RETURN TO THE BASIC CODE



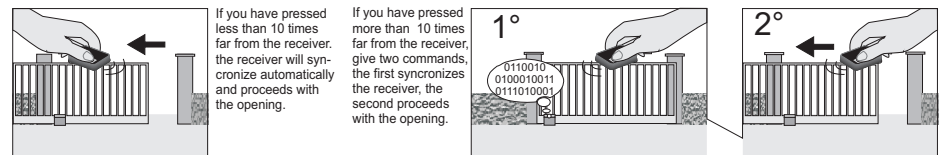
**FIG. C** VISUALIZE THE MEMORIZED CODE



**FIG. D** DUPLICATE



**FIG. E** SYNCRONIZING HAND SET WITH RECEIVER (ROLLING CODE)





**TECHNICAL CHARACTERISTICS :**

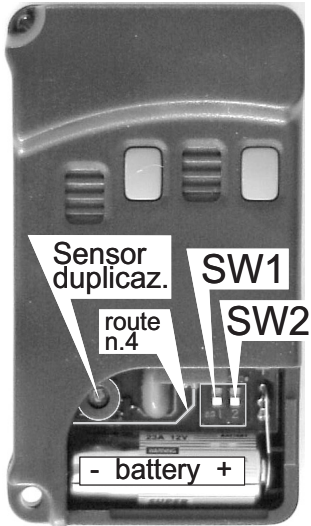


- ▶ power = 12v battery alkaline mod GP23A
- ▶ standard code = 2000 codes
- ▶ rolling-code = 128.000.000 codes for each channel
- ▶ channels : two, four -  
it is possible to generate 8 channels :
- ▶ **chan5** - it is obtained by pressing contemporary buttons n1 - n 3
- ▶ **chan6** - it is obtained by pressing contemporary buttons n 2- n 3
- ▶ **chan7** - it is obtained by pressing contemporary buttons n 1-n 4
- ▶ **chan8** - it is obtained by pressing contemporary buttons n 2- n 4

**IMPORTANT!! :** worn out batteries must be place in their provided containers!!!  
 I GEMINI standard code have route n 4 interrupt ,GEMINI rolling-code have route n 4 not interrupt.

**CODICE STANDARD (10 bit)**

.the handset is given with a Basic Code compatible with traditional handset having the (dip 1-2-3-4-5-6-7-8-9-10 = OFF). It is possible to change the Basic Code to invisible code : (pic.A) - Set



**SW2 to position ON** ,push button n 1 a few seconds,when the button is released and after the led flashes 5 times the code is changed and assigned to the four channels.SET SW2 to OFFposition and memorize the new code on ELCA receiver or control board.

**RETURN TO THE BASIC CODE (pic..B)** -Set SW2 to position ON and commuting 3 times the SW1 (on-off) .Set SW2 =OFF.

It is possible to visualize the memorized codes ( pic. C ) ,this is to enable you to have same code on a traditional handset with 10 dip:

Set SW1 and SW2 to ON, push button n1 the led will show the equivalent contents to dip n 1,if it will have three slow flashes this means that dip n 1 is the same to ON ,if the flashes are quick, this means OFF .while they are flashing,it is possible to change by pushing button n 2 , repete for 10 times to visualize the 10 dip .By pushing the eleventh time button n 1 the led will remain OFF indicating that the procedures are over .SET SW1 and SW2 to OFF .

**DUPLICATE A GEMINI (pic..D)** - It is possible to duplicate a handset MASTER,with another sample -SLAVE-. Open the SLAVE door and set the SW2 = ON , take the MASTER handset and bring the led in front of the SLAVE sensor duplication, push button on MASTER handset ( that you desire to duplicate ) until the SLAVE led start to flash , this means that it received the correct code.During the flashing if a SLAVE button is pressed the code will be combined to that button, otherwise it will be automatically to button n 1. SET SW2 = OFF and

close the door.  
 WE ADVICE THESE OPERATIONS ARE NOT TO BE DONE IN BRIGHT ROOMS ..

**CODICE ROLLING-CODE**

.the rolling-code version is supplied with a memorised code on each button which may change on a particular algorithm, every time the button is pressed. A button may be pressed far from the receiver and the hand set will go out of synchronization with the receiver, therefore in this case you must synchronize the hand set with the receiver :

**SYNCHRONIZATION OF THE HAND SET WITH RECEIVER (fig.E)** -If the button has been pushed less tha 10 times,therefore the code has been changed less than 10 times,the receiver is still synchronized. If the code has been changed more than 10 times, you only have to press the button twice in the direction of the receiver, this will synchronize the receiver with the hand set

**DUPLICATE A HAND-SET** - to duplicate a hand-set, you have the same procedure as a standard code.



**TECHNICAL CHARACTERISTICS :**

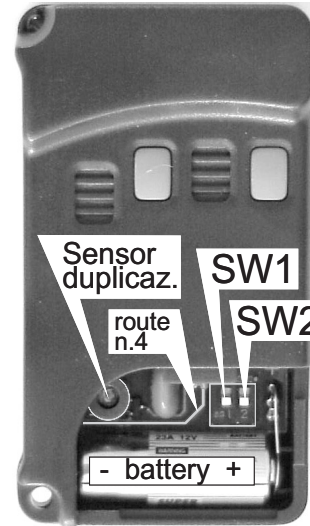


- ▶ power = 12v battery alkaline mod GP23A
- ▶ standard code = 2000 codes
- ▶ rolling-code = 128.000.000 codes for each channel
- ▶ channels : two, four -  
it is possible to generate 8 channels :
- ▶ **chan5** - it is obtained by pressing contemporary buttons n1 - n 3
- ▶ **chan6** - it is obtained by pressing contemporary buttons n 2- n 3
- ▶ **chan7** - it is obtained by pressing contemporary buttons n 1-n 4
- ▶ **chan8** - it is obtained by pressing contemporary buttons n 2- n 4

**IMPORTANT!! :** worn out batteries must be place in their provided containers!!!  
 I GEMINI standard code have route n 4 interrupt ,GEMINI rolling-code have route n 4 not interrupt.

**CODICE STANDARD (10 bit)**

.the handset is given with a Basic Code compatible with traditional handset having the (dip 1-2-3-4-5-6-7-8-9-10 = OFF). It is possible to change the Basic Code to invisible code : (pic.A) - Set



**SW2 to position ON** ,push button n 1 a few seconds,when the button is released and after the led flashes 5 times the code is changed and assigned to the four channels.SET SW2 to OFFposition and memorize the new code on ELCA receiver or control board.

**RETURN TO THE BASIC CODE (pic..B)** -Set SW2 to position ON and commuting 3 times the SW1 (on-off) .Set SW2 =OFF.

It is possible to visualize the memorized codes ( pic. C ) ,this is to enable you to have same code on a traditional handset with 10 dip:

Set SW1 and SW2 to ON, push button n1 the led will show the equivalent contents to dip n 1,if it will have three slow flashes this means that dip n 1 is the same to ON ,if the flashes are quick, this means OFF .while they are flashing,it is possible to change by pushing button n 2 , repete for 10 times to visualize the 10 dip .By pushing the eleventh time button n 1 the led will remain OFF indicating that the procedures are over .SET SW1 and SW2 to OFF .

**DUPLICATE A GEMINI (pic..D)** - It is possible to duplicate a handset MASTER,with another sample -SLAVE-. Open the SLAVE door and set the SW2 = ON , take the MASTER handset and bring the led in front of the SLAVE sensor duplication, push button on MASTER handset ( that you desire to duplicate ) until the SLAVE led start to flash , this means that it received the correct code.During the flashing if a SLAVE button is pressed the code will be combined to that button, otherwise it will be automatically to button n 1. SET SW2 = OFF and

close the door.  
 WE ADVICE THESE OPERATIONS ARE NOT TO BE DONE IN BRIGHT ROOMS ..

**CODICE ROLLING-CODE**

.the rolling-code version is supplied with a memorised code on each button which may change on a particular algorithm, every time the button is pressed. A button may be pressed far from the receiver and the hand set will go out of synchronization with the receiver, therefore in this case you must synchronize the hand set with the receiver :

**SYNCHRONIZATION OF THE HAND SET WITH RECEIVER (fig.E)** -If the button has been pushed less tha 10 times,therefore the code has been changed less than 10 times,the receiver is still synchronized. If the code has been changed more than 10 times, you only have to press the button twice in the direction of the receiver, this will synchronize the receiver with the hand set

**DUPLICATE A HAND-SET** - to duplicate a hand-set, you have the same procedure as a standard code.

FIG. A RANDOM CODE

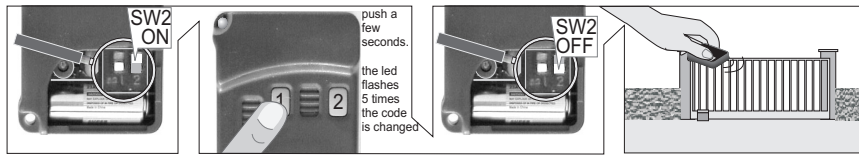


FIG. B RETURN TO THE BASIC CODE

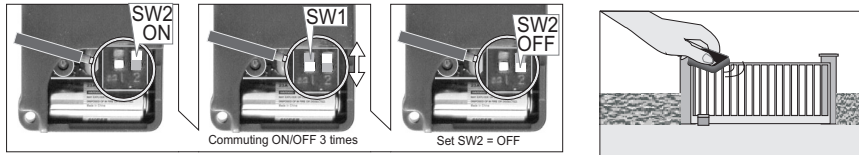


FIG. C VISUALIZE THE MEMORIZED CODE

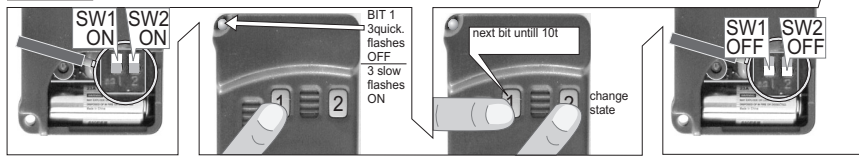


FIG. A RANDOM CODE

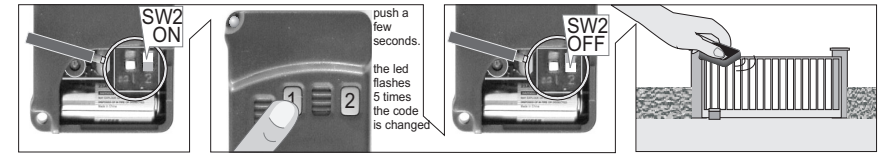


FIG. B RETURN TO THE BASIC CODE

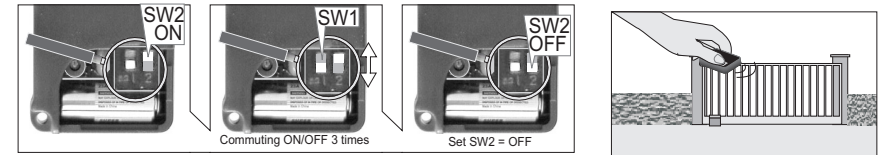


FIG. C VISUALIZE THE MEMORIZED CODE

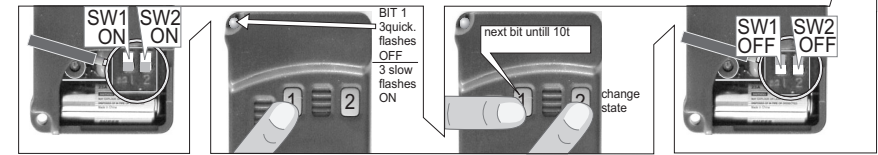


FIG. D DUPLICATE

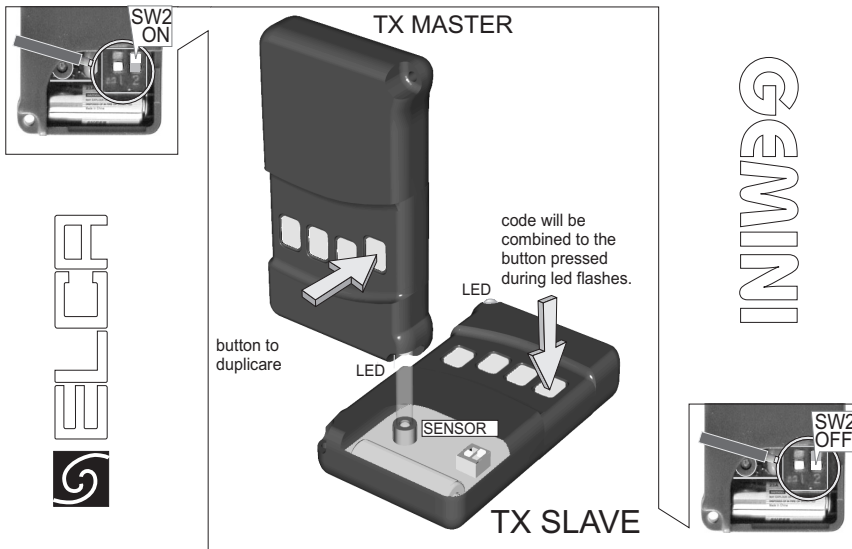


FIG. D DUPLICATE

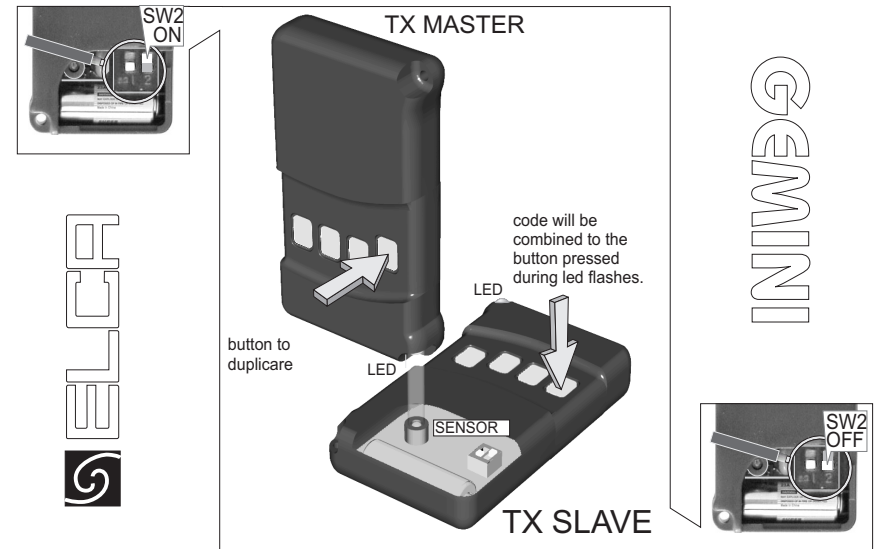


FIG. E SYNCRONIZING HAND SET WITH RECEIVER (ROLLING CODE)

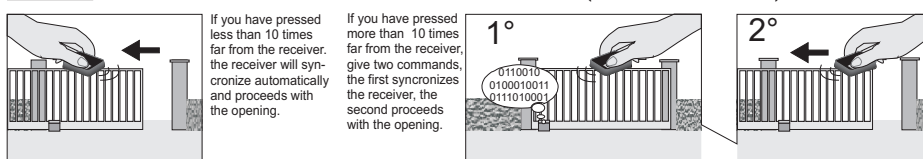


FIG. E SYNCRONIZING HAND SET WITH RECEIVER (ROLLING CODE)

